

Virginia Cooperative Extension York County / Poquoson



**Open 365 Days a Year
York-Poquoson Master Gardeners
Onsite Every Wednesday Morning**



**York/Poquoson Master Gardeners
Learning Garden at the Poquoson Museum
968 Poquoson Avenue, Poquoson, VA**

VIRGINIA POLYTECHNIC INSTITUTE AND STATE UNIVERSITY

Extension is a joint program of Virginia Tech, Virginia State University, the U.S. Department of Agriculture, and state and local governments.

Virginia Cooperative Extension programs and employment are open to all, regardless of age, color, disability, gender, gender identity, gender expression, national origin, political affiliation, race, religion, sexual orientation, genetic information, veteran status, or any other basis protected by law. An equal opportunity/affirmative action employer.

York/Poquoson Master Gardeners Learning Garden at the Poquoson Museum

Established in 2013, it is a “sunny” garden that compliments the “shade” garden in York County. It is composed of individual raised bed gardens for vegetables, herbs, cut flowers and perennials. The Adaptive Gardening section includes a variety of ideas for wheelchair or limited mobility gardeners or those with space limitations or constraints. It includes a large outdoor classroom and is a great place for learning about sustainable gardening practices that can be introduced into home landscapes and gardens. The garden is fully accessible, with hard packed, safe and stable pathways throughout and is open to the public and anyone wanting to take a self-tour. York County/Poquoson Master Gardeners plan, maintain and execute the design and care of the garden.



Raised Bed and Straw Bale Gardens



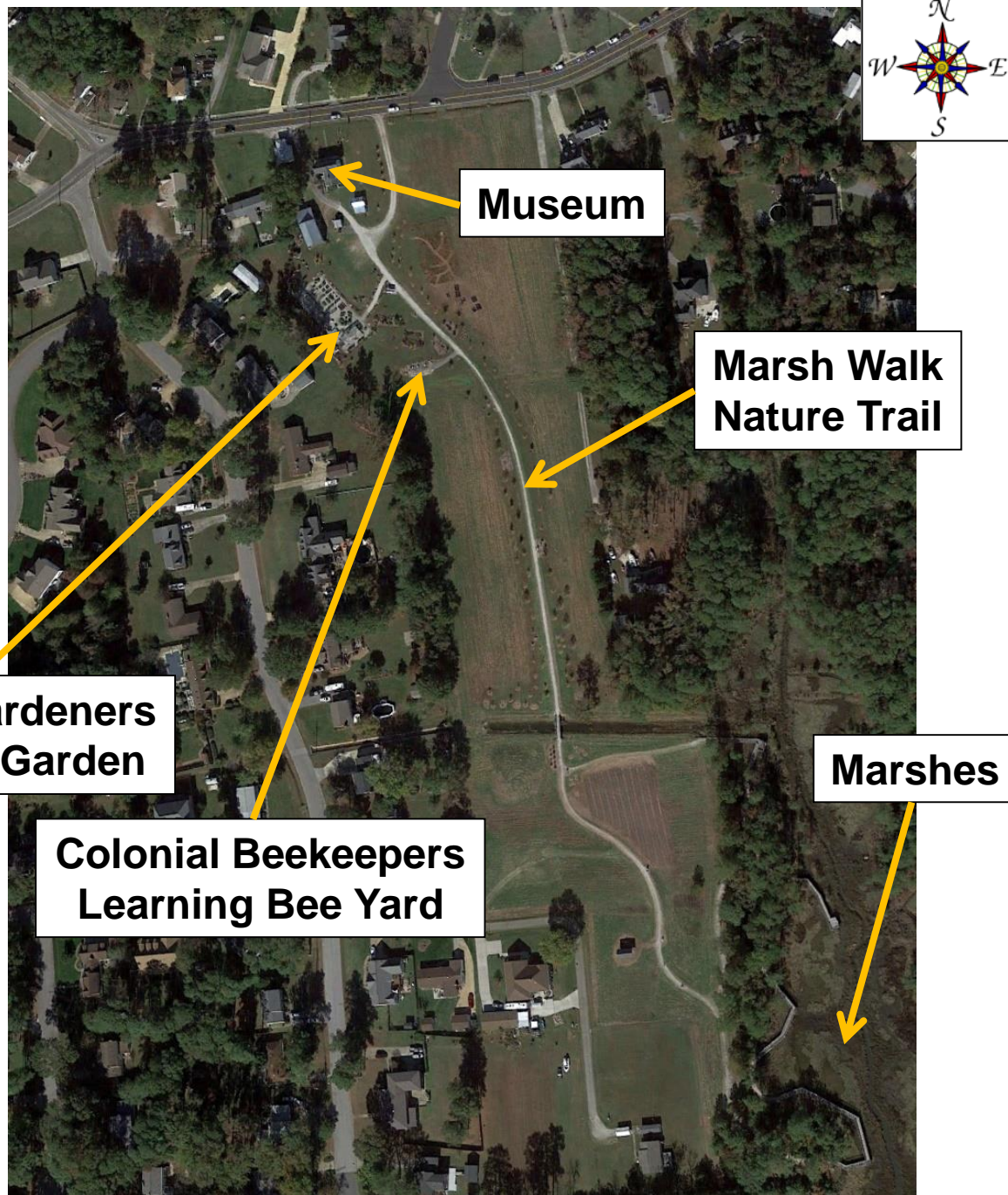
Greenhouse



Adaptive Gardening

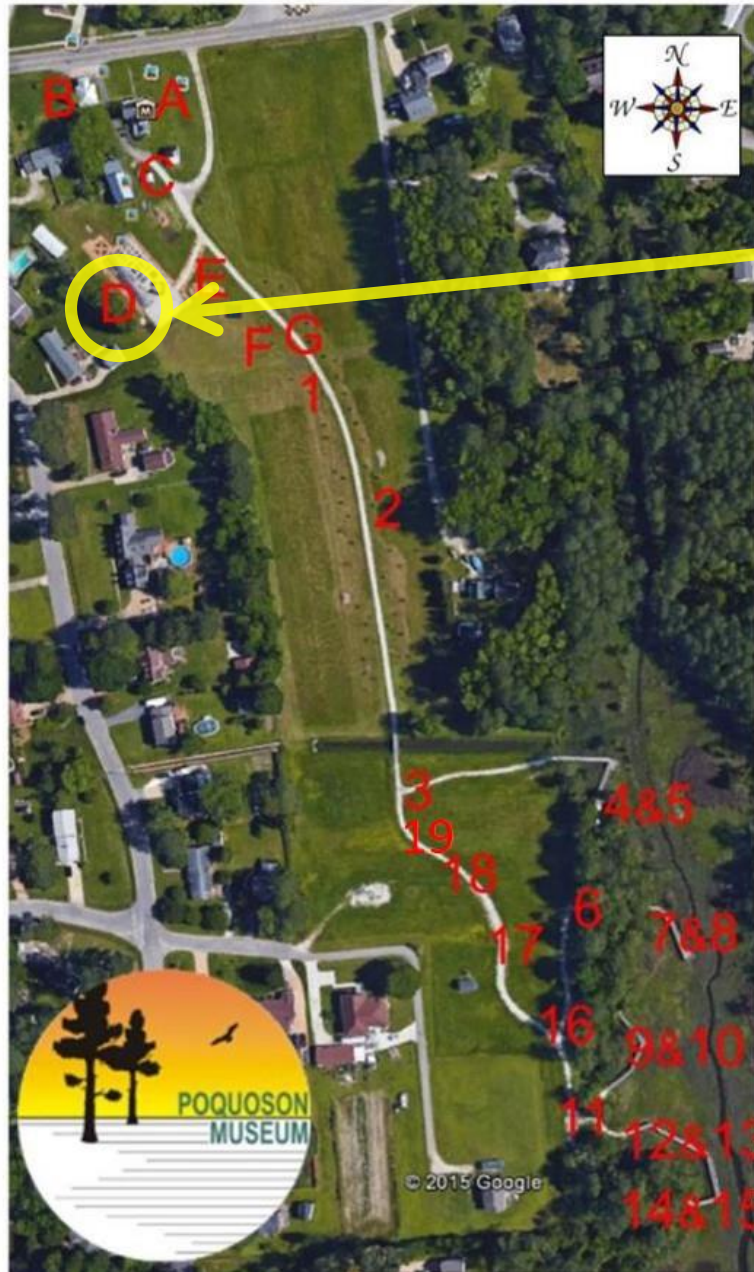


Pollinator Garden



Poquoson Museum Campus

Poquoson Museum Campus Map



Poquoson Museum Campus

- A. Museum – Dryden Farmhouse
- B. Miss Becky's Store
- C. Barn & Wash House
- D. York/Poquoson Master Gardeners Learning Garden**
- E. Information Kiosk
- F. Colonial Beekeepers Assoc. Learning Bee Yard
- G. Marsh Walk Nature Trail

Marsh Walk Interpretive Signs

- 1. Back River Estuary
- 2. Purpose of Marshes
- 3. Brown Pelicans
- 4&5. Fish
- 6. Snakes
- 7. Man and the Marsh
- 8. Marsh Grasses and Aquatic Plants
- 9. Shellfish and Mollusks
- 10. Migratory Waterfowl
- 11. Shorebirds
- 12. Marsh Grasses and Aquatic Plants
- 13. Crabs
- 14&15. The Blue Crab
- 16. Raptors
- 17. Marsh Animals
- 18. Inland Birds
- 19. Longleaf Pines

